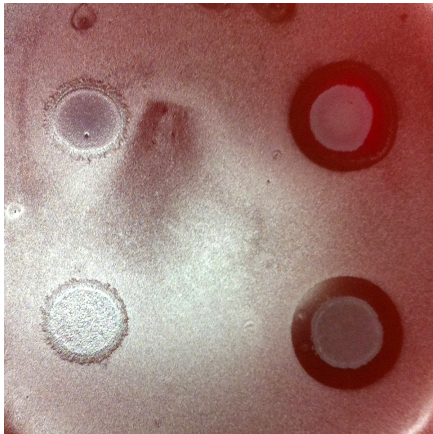


## Spot-on-lawn Assay

- **Lawn:** Plate 120 ml of an overnight culture on a agar plate
- (You also might use soft agar with half the amount of agar in it:
  - Take 3 ml of liquid soft agar, let cool down until you can touch it
  - Add 120 ml of overnight culture and mix
  - Put on plate and make sure that the soft agar is distributed equally)
- Let dry under the fumehood
- **Spots:** Spot 6 ul of overnight cultures on the plate
- Let dry and incubate at 37 °C
- The result should look similar to these:



- Measure the halo diameter and subtract the colony diameter.